



Conservation Division
266 N. Main St., Ste. 220
Wichita, KS 67202-1513

Phone: 316-337-6200
Fax: 316-337-6211
<http://kcc.ks.gov/>

Susan K. Duffy, Chair
Dwight D. Keen, Commissioner
Andrew J. French, Commissioner

Laura Kelly, Governor

District: 1
County: STEVEN - SEWARDS
Location: 20-34S-36W, 04-35S-34W

Project Name: STEVEN - SEWARDS - 2 Well
Control Number: 2023WP0001

Hello Preferred Contractors,

The KCC District **1** is requesting bids for the **STEVEN - SEWARDS - 2 WELL** Project – Control #**2023WP0001**. Please complete the attached Task Order and provide names and resumes for all individuals that will be working on this project. Bids on the **STEVEN - SEWARDS - 2 WELL** project are due by 10:00 a.m. on **January 05, 2023**. Please submit task order bids, resumes, and any discounts to the **Abandoned Well Plugging Department** at abandonedwells@kcc.ks.gov.

If you have any questions concerning bidding on this project, please submit questions electronically to **District Staff** at d.staff@kcc.ks.gov by 3:00 p.m. on **January 01, 2023**. List of all questions and answers will be sent to all preferred contractors.

Evaluation of the task order responses will be based on best price for competency, availability to complete the project in a timely manner, no major problems in prior service, and the best interest of the State of Kansas.

The awarded should be notified by January 10, 2023.

Thank you,

Account Management
Abandoned Well Plugging Department



Conservation Division
Kansas Corporation Commission
266 N. Main Ste 220 • Wichita, KS • 67202
Phone: (316) 337-6200 • Fax: (316) 337-6211
<http://kcc.ks.gov/>



KCC ABANDONED WELL PLUGGING

County: **SEWARD • STEVENS**

District: **1**

Project Name: **SEWARD-STEVENS – 2 WELL**

Control #: **2023WP0001**

Task Order Bid Sheet Instruction

Vendor Information – Project Specific

1. Enter the approved vendor's name (company name) as shown on your district master contract.
2. Enter the exact date that the vendor will be able to start this abandoned well project.
3. Enter how many days it will take to complete the project from start to finish.
4. Enter how many hours of heavy equipment drive time from vendor's yard / home base to initial well site.
5. Enter how many miles one-way from your home base to the initial wellsite?

Vendor Price – Project Specific

6. Prices per service/ per item for this project
 - Enter vendor's bid price for each service or item in lines provided.
 - Bid sheet may contain all possible services regardless of whether they will be used in the project. All line items must be completed. Substitute N/A or 0 if no price is given.
 - Discounts for master contract prices may be given in the lines provided. Substitute N/A or 0 if no discount is applicable. **The bid will not be accepted if discounts are higher than master contract price.**

Master contract review:

https://supplier.sok.ks.gov/psc/sokfsprdsup/SUPPLIER/ERP/c/NUI_FRAMEWORK.PT_LANDINGPAGE.GBL?&

Pulling Unit	Perforate (Initial Run)
Pump and Power Swivel Unit	Perforate (Subsequent Runs)
Wash Down Pump	Shooting Off (Initial Run)
Backhoe	Shooting Off (Subsequent Runs)
Dozer	Cement Date Acquisition (Bond Log)
Winch Truck	Vacuum Truck per hour of work

Transportation & Delivery Charge – Project Specific

7. Charges for Transportation & Delivery for this project
Vendor will be compensated for transportation and delivery charges. Bid sheet charges are locked per this project. Use tables provided on page 6 to calculate charges.

- Transportation & Delivery Charge
 - Price per Service/ Per Item
 - Add the following services to equal the **Equipment Total** (10b)
 - Pulling Unit (2b) + Backhoe (3b) + Dozer (3e) + Vacuum Truck (5a)
 - Vendors Information
 - Equipment delivery hours to initial site from location/ home base - one-way (4) multiplied by the Equipment Total (10b) equals the **Transportation & Delivery Charge per project (10a)**
- Loaded Cement Charge
 - Loaded cost per mile from cement plant to wellsite (cost from cement ticket) (11b)
 - Number of miles from cement plant to wellsite (11c)
 - Loaded cost per mile times number of miles equals **Bulk Cement Transportation Mileage Charge Total (11a)**

Important Information

- Fishing and specialty tools required by KCC staff to complete this project will be paid at vendors cost. A copy of the invoice for these tools must be included with your invoice.
- If a service price will not be used, N/A may be substituted in its place. Vendors can only invoice services with prices that are used within this project.

Please initial the bottom of each bid sheet to confirm all information is correct.



KCC ABANDONED WELL PROJECT

County: **SEWARD • STEVENS** District: **1**

Location: **20-34S-36W, 04-35S-34W**

Project Name: **SEWARD-STEVENSONS – 2 WELL**

Control # **2023WP0001**

Total # of Wells: **2**

Instructions: Please fill in the line items below with vendors bid price. Discounts on contract prices (for this project only) may be given on specific line items in the appropriate “Contract Discount” box. All discount prices MUST be *less than* the original or amended master contract price. Although discount prices are optional, you are required to fill in the “Contract Discount” box with an **N/A or 0** if no discounts are given.

All line items must be filled in. Bid sheets will contain all possible plugging services regardless of whether they will be used in this project. **N/A or 0 should be substituted if no price is given. However, if you choose not to provide a price, that line item (service) cannot be invoiced when the project is completed.** Initial and date each page of the bid sheet to confirm all information is correct.

Task Order Bid Sheets will be returned to the submitting contractor for any errors or incomplete line items. Bidder will have 24 hours from the time of return to resubmit a corrected Task Order Bid Sheet.

1a	Company Name:
	Smith Plugging LLC
1b	What date would you be able to start the Project?
	January 15, 2023
1c	What is your estimated time to complete the project?
	6 days
1d	How many hours would it take for a single piece of equipment to be delivered to the initial site from your location / home base?
	1 hour
1e	How far (in miles) is your location / home base to the project site one-way?
	20 miles

Prices per service/ per item for the SEWARD-STEVENSONS – 2 WELL Project

Box 2:

PROJECT SUPERVISION			
		Price	Contract Discount
2a	Contract Supervision	\$200.00	<i>per well</i> //

Initial	LR	Date	01.02.2023
---------	-----------	------	-------------------

Box 3:

PLUGGING EQUIPMENT SERVICES				
		Price		Contract Discount
3a	Drilling Rig	\$100.00	<i>per hour</i>	////////////////////
3b	Pulling Unit	Master Contract Price	<i>per hour</i>	\$N/A
3c	Pump and Power Swivel Unit	Master Contract Price	<i>per hour</i>	\$N/A

Box 4:

DIRT SERVICES/ EXCAVATION				
		Price		Contract Discount
4a	Skid Steer	\$50.00	<i>per hour</i>	////////////////////
4b	Back hoe	Master Contract Price	<i>per hour</i>	\$N/A
4c	Mini Excavator	\$N/A	<i>per hour</i>	////////////////////
4d	Track hoe	\$N/A	<i>per hour</i>	////////////////////
4e	Dozer	Master Contract Price	<i>per hour</i>	\$N/A
4f	Winch truck	Master Contract Price	<i>per hour</i>	\$N/A

Box 5:

WIRELINE SERVICES (Perforations)				
		Price		Contract Discount
5a	Perforate (Initial Run)	Master Contract Price	<i>per run</i>	\$75.00
5b	Perforate (Subsequent Runs)	Master Contract Price	<i>per run</i>	\$75.00
5c	Shooting Off (Initial Run)	Master Contract Price	<i>per run</i>	\$75.00
5d	Shooting Off (Subsequent Runs)	Master Contract Price	<i>per run</i>	\$75.00

Box 6:

WATER HAULING SERVICES				
		Price		Contract Discount
6a	Vacuum Truck per hour of work	Master Contract Price	<i>per hour</i>	\$N/A
6b	Fresh Water	\$1.00	<i>per bbl</i>	////////////////////
6c	Disposal Fee Fluid	\$1.00	<i>per bbl</i>	////////////////////

Box 7:

PUMPING SERVICES				
		Price		Contract Discount
7a	Primary Pump Charge	\$200.00		////////////////////
7b	Secondary Pump Charge	\$200.00		////////////////////

Box 8:

CEMENT MATERIALS				
		Price		Contract Discount
8a	Additives: Gel	\$15.00	per sack	////////////////////
8b	Add: Hulls	\$15.00	per sack	////////////////////

District 1, 2, & 4 Projects Only				
		Price		Contract Discount
Cement Type: Provide a price for one or both cement types being used. (See plugging plan for specifics and well details)				
8c	Cement – 60/40	\$18.00	per sack	////////////////////
8d	Cement – Common	\$18.00	per sack	////////////////////

District 3 Projects Only				
		Price		Contract Discount
Cement Type: Provide a price for one or both cement types being used. (See plugging plan for specifics and well details)				
8e	Cement – 60/40	\$N/A	per sack	////////////////////
8f	Cement – Common	\$N/A	per sack	////////////////////

Box 9:

MISCELLANEOUS				
		Price		Contract Discount
9a	Portable Surface Pit(s)	\$85.00	per pit	////////////////////
9b	Welding Service	\$85.00	per bbl	////////////////////
9e	Pit Liner	\$50.00	per liner	////////////////////
9c	Misc. Non-Salvageable Disposal & Tank Removal including contents (specific instructions in plugging plan)	\$800.00	per well	////////////////////

Box 10:

PROJECT SPECIFIC – DISTRICT SPECIFIC				
		Price		Contract Discount
10a	Mud Rotary Unit	Master Contract Price	per hour	\$N/A
10b	Wash Down Pump	Master Contract Price	per hour	\$N/A
10c	Cement Date Acquisition (Bond Log)	Master Contract Price	per run	\$N/A
10d	Tanker Truck – Fresh Water (80 barrels)	\$N/A	per hour	////////////////////
10e	Dump Baler (including wireline)	\$100.00	per hour	////////////////////
10f	Cast Iron Bridge Plug – 4.5” (including wireline)	\$50.00	per plug	////////////////////
10g	Cast Iron Bridge Plug – 5.5” (including wireline)	\$50.00	per plug	////////////////////
10h	Tubing Rental – Districts 1, 2, & 4	\$0.20	per foot	////////////////////
10i	Tubing Rental – District 3	\$N/A	per project	////////////////////

Charges for Transportation & Delivery for the SEWARD-STEVENSONS - 2 WELL Project

Bid sheet delivery charges are locked per project.

Box 11:

		Price		Contract Discount
11a	Transportation & Delivery Charge	\$250.00	<i>per project</i>	////////////////////

Vendor will be paid the hourly contract bid price per piece of equipment to deliver the equipment to the project site. Use below tables to calculate the transportation & delivery charge (11a).

Price per Service/ Per Item

*Add the following services to equal the **Equipment Total (11b)**:
Pulling Unit (3b) + Backhoe (4b) + Dozer (4e) + Vacuum Truck (6a)*

	3b) Pulling Unit	\$100.00	<i>per hour</i>
	4b) Backhoe	\$50.00	<i>per hour</i>
	4e) Dozer	\$50.00	<i>per hour</i>
+	6a) Vacuum Truck	\$50.00	<i>per hour</i>
	11b) Equipment Total	\$250.0	<i>per hour</i>

Vendors Information

*Equipment delivery hours to initial site from location/ home base - one-way (1d)
multiplied by the Equipment Total (11b) equals the **Transportation & Delivery Charge per project (11a)***

	11b) Equipment Total	\$250.00	<i>per hour</i>
X	1d) Delivery hours to initial site from location or home base (one-way)	1	<i>hours</i>
	11a) Transportation & Delivery Charge Total	\$250.00	<i>per project</i>

Box 12:

		Price		Contract Discount
12a	Bulk Cement Transportation Mileage Charge	\$450.00	<i>per project</i>	////////////////////

Loaded Cement

Loaded cost per mile from cement plant to wellsite (cost from cement ticket) (12b).

Number of miles from cement plant to wellsite (12c)

*Loaded cost per mile times number of miles equals **Bulk Cement Transportation Mileage Charge Total (12a)***

	12b) Loaded cost of cement to wellsite	\$3.00	<i>per mile</i>
X	12c) Miles from cement to wellsite	50	<i>miles</i>
	12a) Bulk Cement Transportation Mileage Charge Total	\$450.00	<i>per project</i>

Important Information

- Fishing and specialty tools required by KCC staff to complete this project will be paid at cost. A copy of the invoice for these tools must be included with your invoice.
- If a service will not be used or a price does not want to be given, N/A may be substituted in its place. Vendors can only invoice services with prices that are used within the project.

Contractor Signature	Loni Rees	Date	01.02.2023
----------------------	-----------	------	------------

PROJECT WELL PLUGGING PLAN

Project Name: SEWARD-STEVENS – 2 WELL Project

Control #: 2023WP000XX • Total # of Wells: 2

County: STEVENS • SEWARD

- | | |
|-----------------------------|--------------------------------|
| 1. LEASE: KINSER | API: 15-189-21155-00-01 |
| LEGAL: SW NE SW, 20-34S-36W | COUNTY: STEVENS |
| 2. LEASE: LEMENT | API: 15-175-20072-00-00 |
| LEGAL: SW 04-35S-34W | COUNTY: SEWARD |

PLUGGING PLAN FOR: SEWARD-STEVENSONS – 2 WELL PROJECT

Control #2023WP000XX

1. LEASE NAME: KINSER
API: 15-189-21155-00-01

LOCATION: SW NE SW, 20-34S-36W
COUNTY: Stevens Co

LANDOWNER: Wade D & Mary Ruth Greenwood.
1500 s. Monroe Hugoton KS, 67951-3034
Contact Number to follow

SITE SUMMARY: Well sits in wheat field. Tank battery consists of 210 bbl open top fiberglass tank, gas pack and a meter run

WELL DETAILS: 20" conductor at 40' with 100 sacks cement
8 5/8" surface casing set at 1774' with 722 sacks cement
5.5" production casing set at 6798' with 210 sacks cement
Well has 2 stage tool at 3329' with 365 sacks cement

TOC at 2400.
Anhyd: 1740'.
Permian 550'
Perfs: 6278-84, 6310-24

PLUGGING PRODUCERS: Set CIBP at 6230' w /2 sacks cement
Pressure test casing-cut and pull
1st plug at 1810' with 10 sacks, gel 50 sacks cement
2nd plug 600' with 40 sacks cement
3rd plug at 60' to surface. 60 with 40 POZ 4 % gel
If casing does not test or we experience unknown circumstance we will adjust procedure in the field

OTHER: Directions; East of Houghton approximately 4 miles on 51 (road N) to road 18,
South 7 miles to road F,
Back west 1 mile to 17,
Then north .25 miles west into.
Field tech will lead if land owner changes due to crops.

210 bbl fiberglass tank and contents to be removed by winning contractor



11/4/2020
 Hope Company, LLC
 Kinser #2-4A
 SW 20-T34S-R36W



11/4/2020
 Hope Company, LLC
 Kinser #2-4A

Facing northeast in picture showing lease sign

es closed



2. LEASE NAME: LEMERT
API: 15-175-20072-00-00

COUNTY: SEWARD
LOCATION: SW SW 4-35S-34W
FSL: 660'
FEL: 4620'

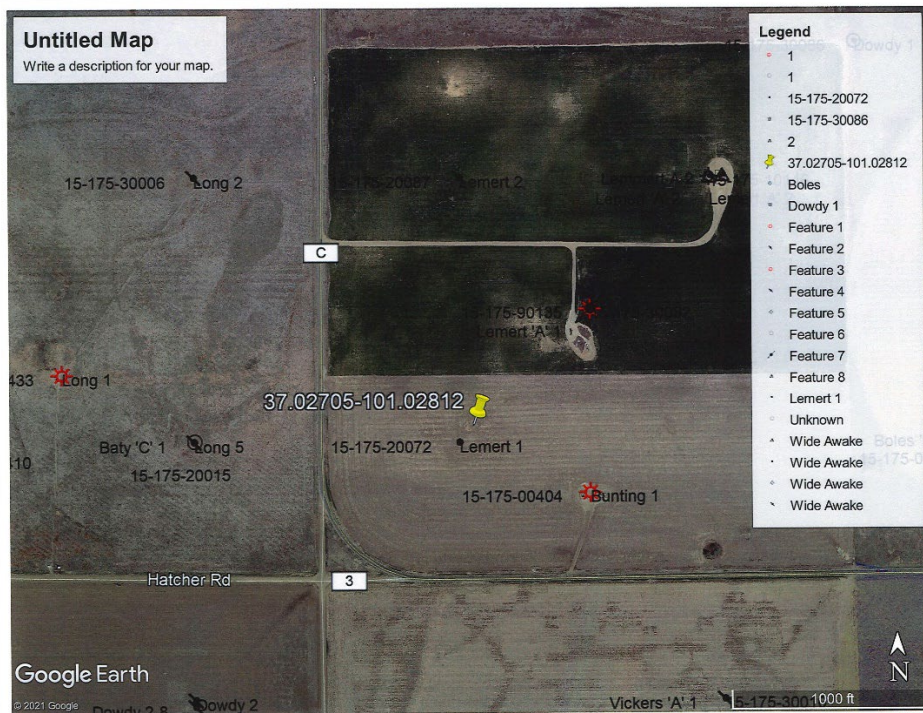
LANDOWNER: Lemert Rev Trust
Contact info to follow

SITE SUMMARY: Well head with tubing-no surface equipment.
Located in wheat field

WELL DETAILS: NO cement data on this well,
Drilled 1969-last prod 1987
8 5/8" casing set @ 1645'
5.5" set at 6599'
Perfs: MISS @ 6493-96, 6498-6502
Base Anhy:1695'

PLUGGING
PRODUCERS: Pull tubing-tag bottom,
Set CIBP at 6440' with 2 sacks cement,
Pressure check casing- if good cut and pull.
1st plug at 1695' with 10 gel-50 sacks cement,
2nd at 550' with 40 sacks cement,
3rd plug at 40' to surface,
60/ 40 POZ 4% gel,
If casing does not pressure up we will adjust procedure in the field accordingly.

OTHER: Directions: From 54 highway at Liberal 6 mile west to road C,
North into-field tech will lead.



11/19/2020
Lemert Twin #1
SW 4-T35S-R34W
Seward County, Kansas