

Emergency Plans

§192.615

§192.605 O&M Manual

- Each operator shall prepare and follow for each pipeline, a manual of written procedures for conducting operations and maintenance activities and for emergency response.
- The procedures required by §§192.613(a), 192.615, and 192.617 must be included in the manual required by paragraph (a) of this section

§192.615 Emergency Plans

- §192.615 (a) Each operator shall establish written procedures to minimize the hazard resulting from a gas pipeline emergency.





PEMEX – Reynosa, MX

§192.615 (a)(1) Emergency Plans



- Procedures for receiving, identifying, and classifying notices of events which require an immediate response*

§192.615 (a)(1) Emergency Plans



- Receiving Notices:
 - 24 hour telephone number
 - ???
 - How is it answered?
 - ???

§192.615 (a)(1) Emergency Plans

- Instructions for Callers:
 - Safety instructions for someone reporting a natural gas pipeline event
 - Do the instructions provide information for the safety of people first



§192.615 (a)(1) Emergency Plans

- Classifying Notices:

- How do you classify events?
 - Priority 1 = Immediate response
 - Priority 2 = Next available person
 - Priority 3 = Someone within 2 hours



- Person receiving calls - trained to understand and make decisions

§192.615 (a)(2) Emergency Plans

- Establishing and maintaining adequate means of communication with fire, police, and other public officials.
- Current list of emergency contact numbers,
- update the list at regular intervals
 - Field and call center

EMERGENCY CONTACT LIST
To Be Posted at All Work Locations

Location / Address: _____
Prepared By: _____
Date: _____
Date of List: _____

EMERGENCY RESPONSE CONTACTS

Agency	Telephone
Fire	
Police	
Police (non-emergency)	
Disaster Services	
Public Health	
Other	
Other as needed	

COMPANY CONTACTS

Position	Telephone
President	
Safety Coordinator	
Dispatcher	
Other as needed	

PROVINCIAL/FEDERAL GOVERNMENT CONTACTS

Agency	Telephone
Police	
Other	

OTHER CONTACTS

Agency	Telephone
Power Company	
Telephone Company	
Gas Company	

CLIENT SAFETY CONTACT

Company Name	Company #	Contact	Contact #

LOCAL EMERGENCY NUMBERS BY INSHORE COMMUNITY

Area	Police Dispatch	Police Emergency	Fire	Ambulance	Hospital	Medical Aid

Company Name: _____
Address: _____
Phone Number: _____

§192.615 (a)(2) Emergency

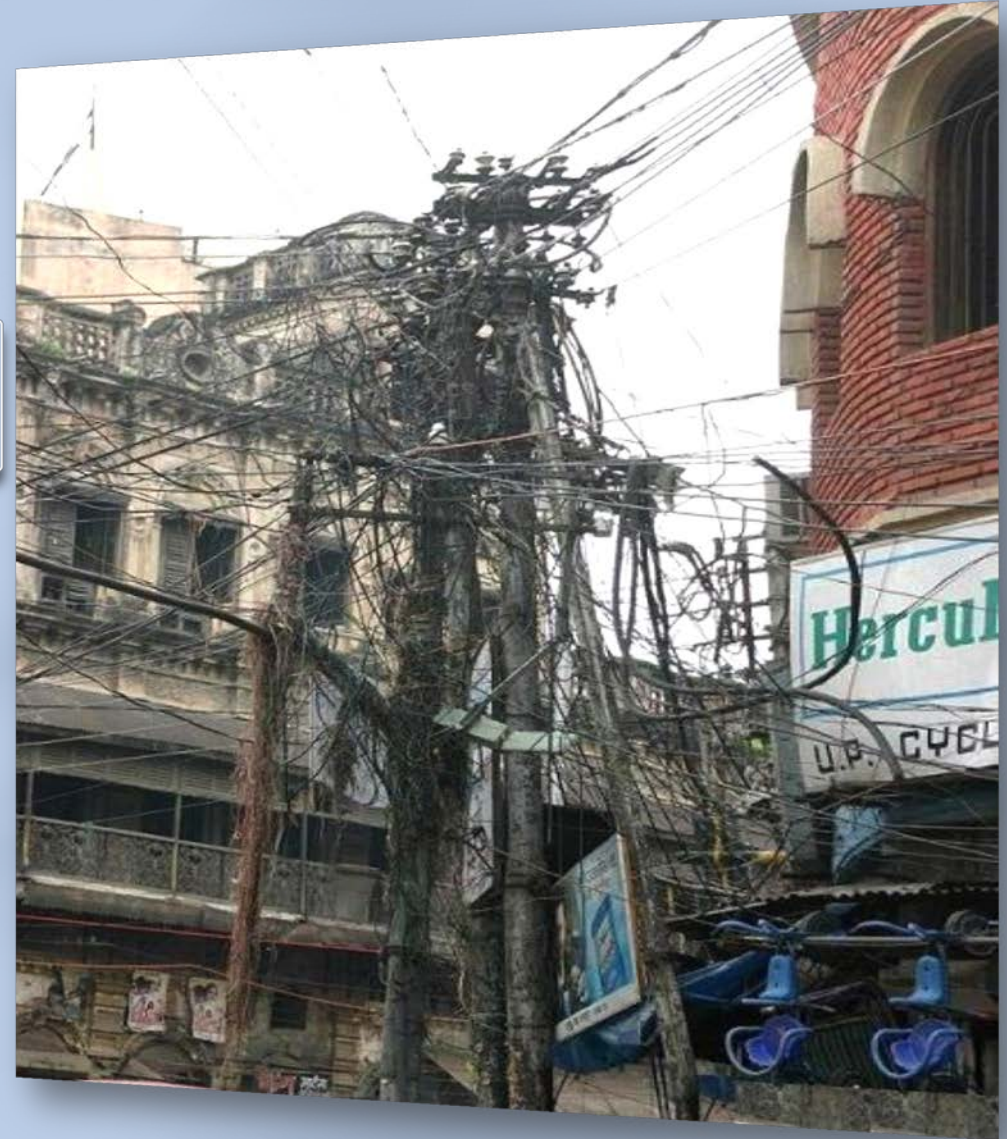
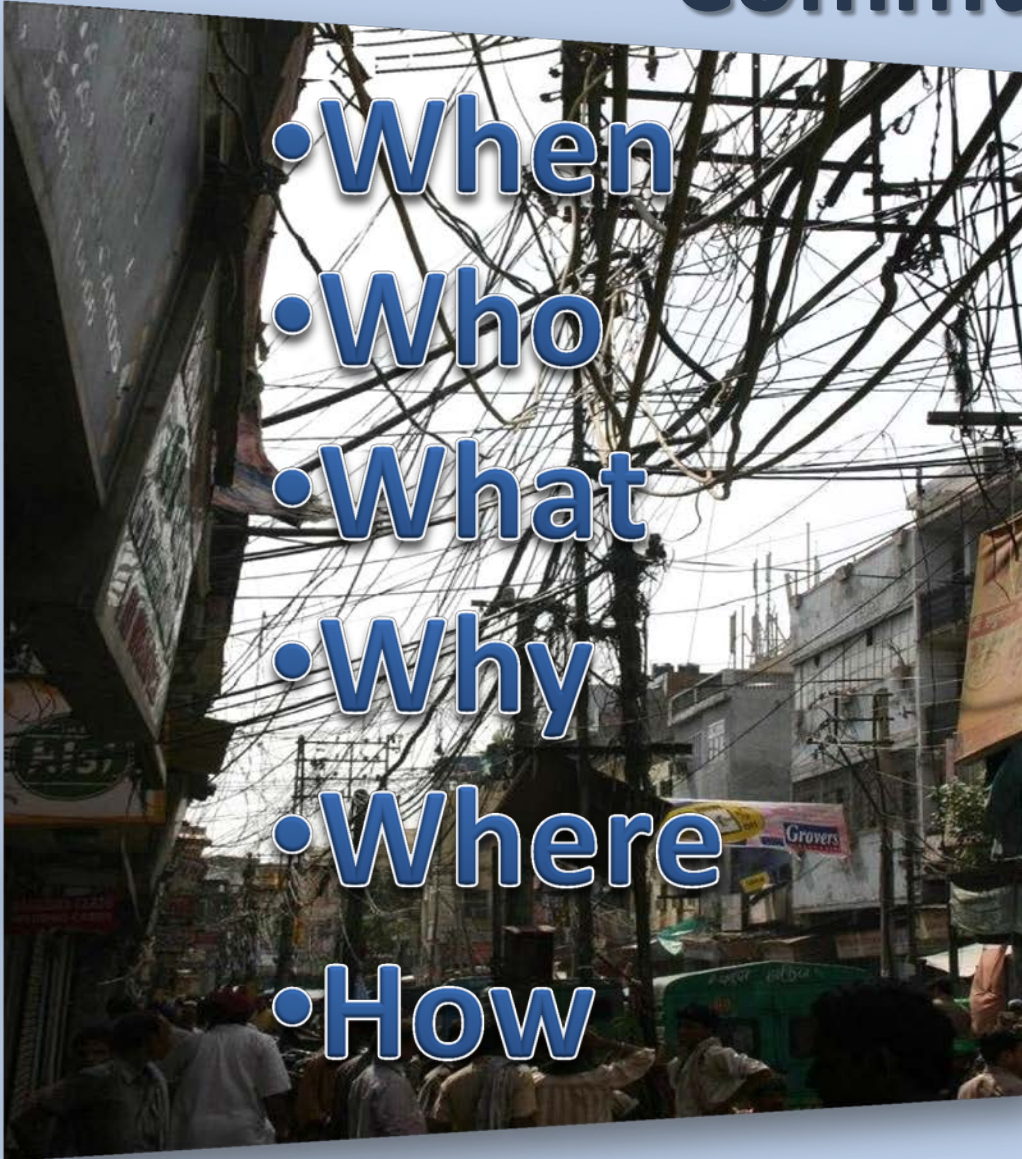
- How do you respond to these notifications?
- Additional telephone trunk lines, switchboard facilities, or personnel
- Back-up power supply



Communications Issues

- When
- Who
- What
- Why
- Where
- How

W5H



§192.615 (a)(3) Emergency Plans

- Prompt and effective response to a notice of each type of emergency:
 - Gas detected inside or near a building
 - Fire located near or directly involving a pipeline facility



§192.615 (a)(3) Emergency Plans



- Explosion occurring near or directly involving a pipeline facility

§192.615 (a)(3) Emergency Plans

- Natural disasters



§192.615 (a)(4) Emergency Plans

Emergency Contacts

Name	Position	Number
Miller	Fitter	333-1234
Friend	Laborer	333-5678
Santos	Crew Leader	333-9012
West	BH-Operator	333-3456
Wa-Le	Line Tech	333-7890
Kichler	Locator	333-5555

- Availability of personnel, equipment, tools, and materials, as needed at the scene of an emergency
 - Current
 - personnel contact lists, numbers, and responsibilities
 - lists of equipment, tools, and materials,
 - contractor contact list, capabilities, and equipment, available to respond to an emergency

§192.615 (a)(4) Emergency Plans

- Responsibility for overall coordination of personnel and execution of the emergency response plan
- Incident command system (ICS)



§192.615 (a)(5) Emergency Plans



- Actions directed toward protecting people first and then property.
 - Determine the scope of the emergency.
 - Evacuate and prevent access to premises that are or may be affected.
 - Prevent accidental ignition.
 - Report to the appropriate supervisor on the situation, and request further instructions or assistance if needed.

§192.615 (a)(5) Emergency Plans

- Actions directed toward protecting people first and then property.

H	Hazard
E	Extent
L	Life
P	Property
S	Safe

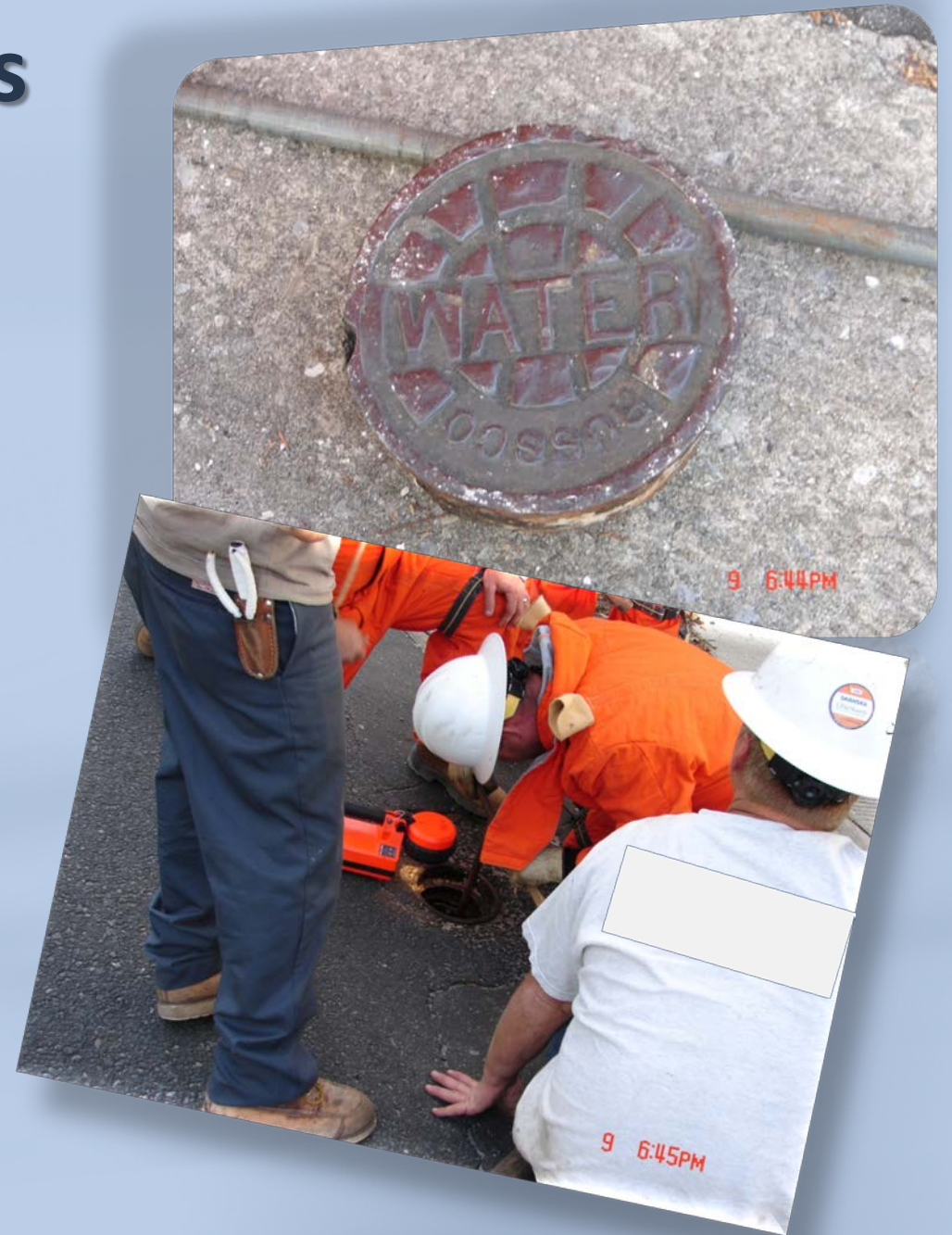
§192.615 (a)(6) Emergency Plans



- Emergency shutdown and pressure reduction necessary to minimize hazards to life or property
 - Should consider:
 - ✓ Responsibility for shutdown
 - ✓ Identification of critical valves, access to and operability of valves

§192.615 (a)(6) Emergency Plans

- Plans to shut down or reduce pressure should consider:
 - ✓ Provisions for confirming effectiveness
 - ✓ Other facilities required for shutdown



§192.615 (a)(7) Emergency Plans



- Making safe any actual or potential hazard to life or property
 - Eliminating potential sources of ignition
 - Determining the full extent of the hazardous area, including areas of gas migration and secondary or auxiliary damage
 - Monitoring for a change in the extent of the hazardous area or other conditions

§192.615 (a)(8) Emergency Plans

- Notifying appropriate fire, police, and other public officials of gas pipeline emergencies ...
 - Contacting and coordinating with public officials, the actions to be taken
 - Maintaining ongoing communication to ensure that information is:
 - pertinent to emergency response
 - shared in a timely manner.
 - Notifying response personnel when the emergency has been made safe.
 - ADB-2012-09

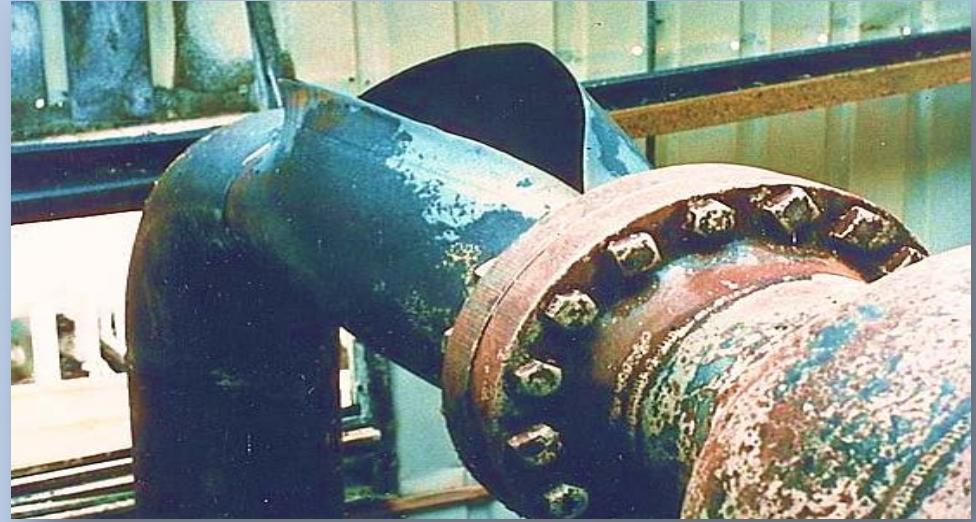


§192.615 (a)(9) Emergency Plans

- Safely restoring any service outage
 - Re-survey of the area involved in an incident to locate any additional damages
 - Communication with control room
 - Purging and re-pressuring of pipeline facilities
 - Monitoring of facilities after service is restored



§192.615 (a)(10) Emergency Plans



- Procedures for initiating investigation of failures in accordance with §192.617
 - Log of significant events and of actions taken
 - Preservation of failed facilities or equipment for analysis.
 - Obtaining and submitting information required by regulatory bodies

§192.615 (a)(10) Emergency Plans

- Incident Command System



- [FEMA ICS Resource Center](#)

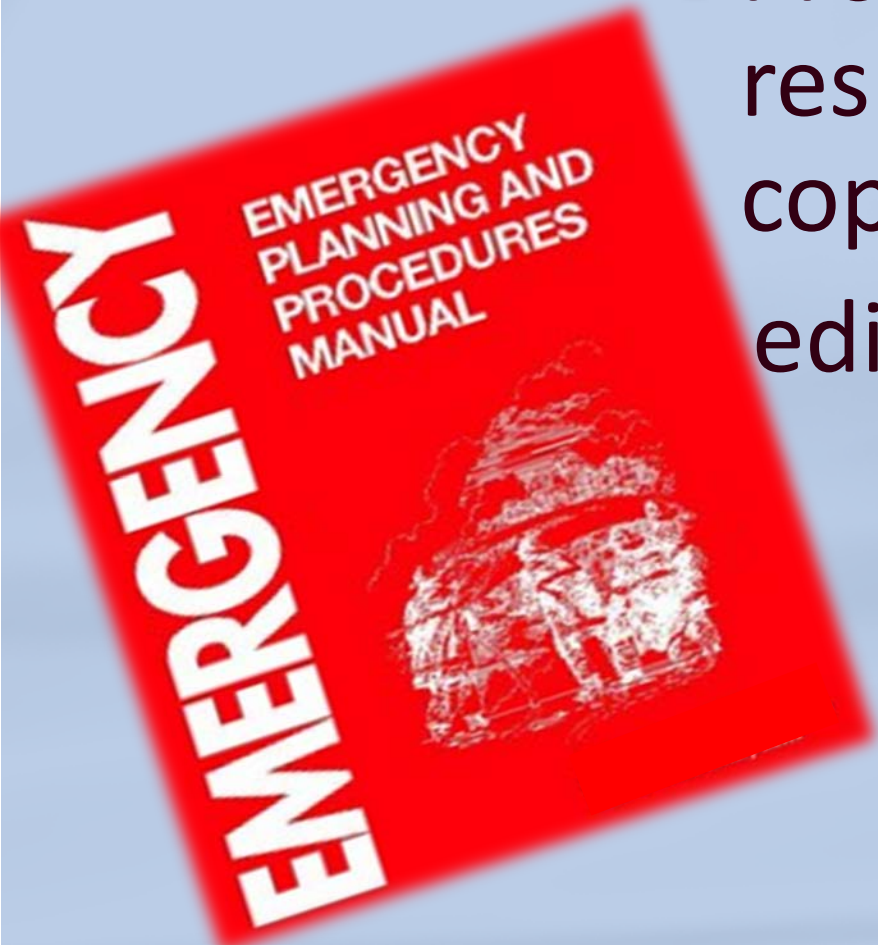
§192.615 (a)(11) Emergency Plans

- Actions required to be taken by a controller



§192.615 (b) Emergency Plans

- Each operator shall:
 - Provide supervisors who are responsible for emergency action a copy of that portion of the latest edition of the emergency procedures



§192.615 (b) Emergency Plans



- Each operator shall:
 - Train the appropriate operating personnel
 - Review employee activities

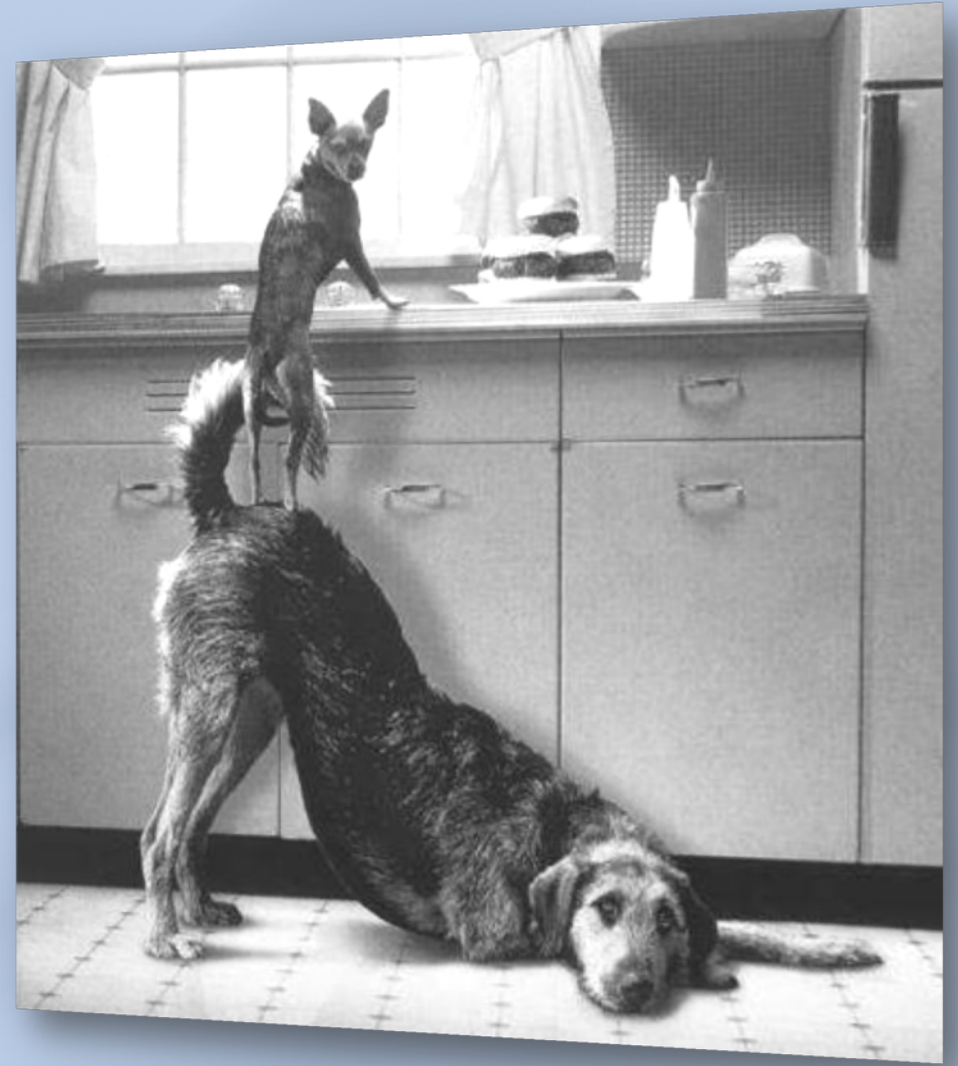
§192.615 (c) Emergency Plans

- Shall establish and maintain liaison with fire, police, and other public officials to:
 - Learn their responsibilities and resources
 - Acquaint them with your abilities in responding to a gas pipeline emergency



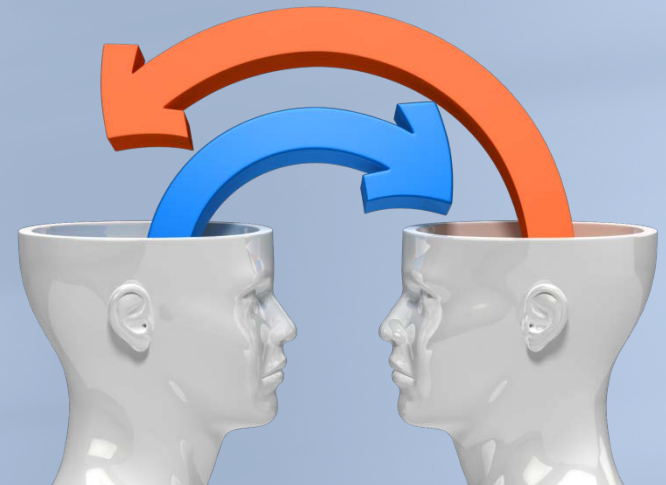
§192.615 (c) Emergency Plans

- Identify the types of gas pipeline emergencies which may require notification
- Plan how you and the public officials can engage in mutual assistance to minimize hazards to life or property



What is Liaison?

- Coordination: the exchange of information or the planning of joint efforts by two or more people or groups, often of military personnel
- A communication for establishing and maintaining mutual understanding and cooperation



Liaison Issues

- Generic message to attend meeting doesn't catch attention
 - Use term **“PIPELINE EMERGENCY”**
 - Use titles rather than names for invitations
 - Multiple invitations for large departments
- Credit for training
 - Qualify for HAZWOPER or emergency training
 - Make credits easy

Liaison Meetings

- Prefer face to face meetings rather than public meetings
 - At their facility
 - Prefer local operations people
 - Contact all shifts
 - Volunteer departments – weekends rather than weekday

Emergency Plans

- ADB – 10 – 08 – Emergency Plans
- Don't want full plan
- Quick reference on:
 - what to do and
 - contact lists
- Portable – multiple copies and available in their vehicles

Don't forget

Activities under §192.615 may also be credited to §192.616

- Public Awareness
- Drills, planning meetings

Document, document, and document some more

Questions?

